



JSW Steel Limited
Vijayanagar Works Visit
December 2018

Vijayanagar: The Beginning

Unique Challenges

- Barren Land
- Inadequate Water Source, No Electricity
- Poor Infrastructure, No Road And Rail Connectivity
- Non Availability Of Coking Coal, Low Quality Iron Ore
- Lack of skilled manpower



Vijayanagar: At present

Current Status

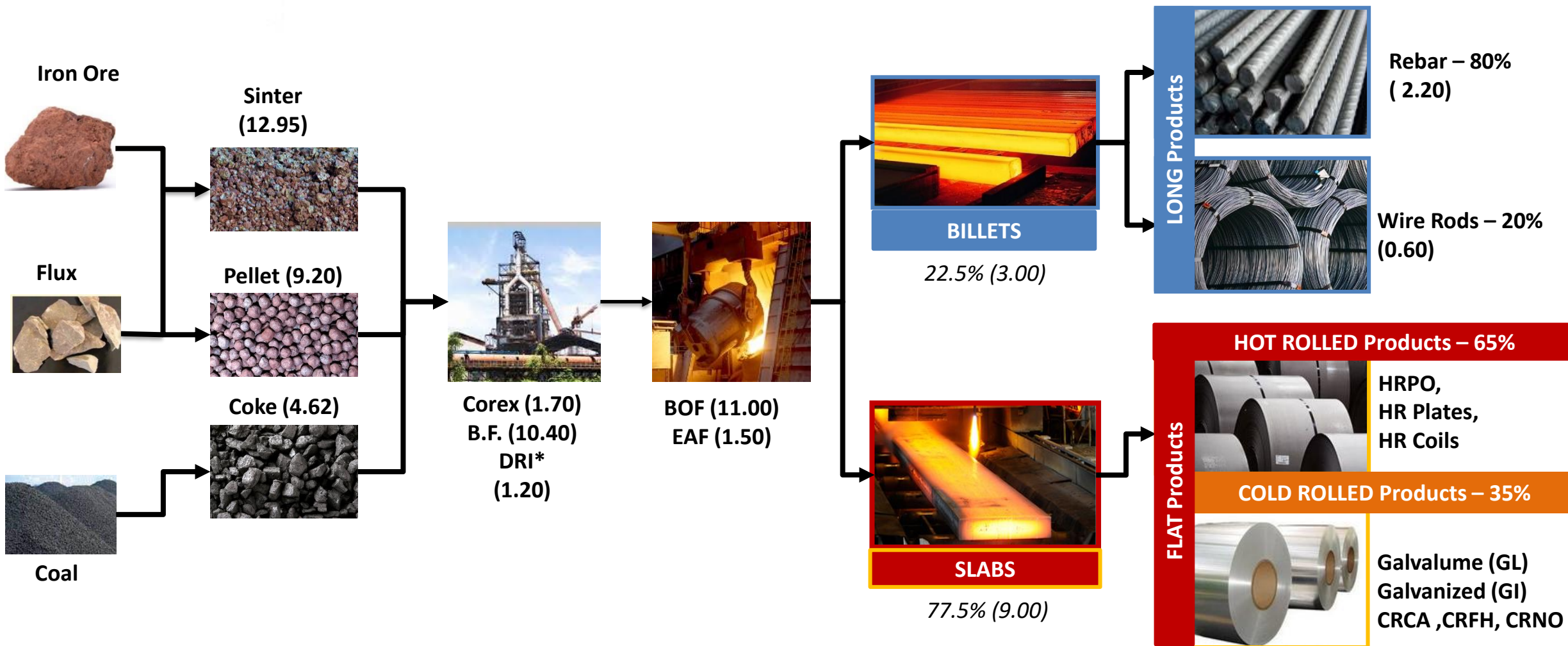
The Vijayanagar plant is amongst the world's most efficient steel production facilities in terms of conversion cost

- Largest single location integrated steel plant in India
- Fastest growing steel plant in India
- Highest manpower productivity in India
- Highest growth rate in automotive steel sector in India
- Widest and largest hot strip mill in India

This plant manufactures a wide range of steel products in the flat and longs segments.



Vijayanagar's Steel Manufacturing Value Chain



Strategic Collaboration Agreement



Partnership overview

- 14.99% minority stake bought by JFE in July 2010
- Access to cutting edge technologies
- Operational excellence for cost reduction
- Balance Sheet deleveraging to support growth

Technology agreements benefits:

- ✓ Access to fast growing auto steel market
- ✓ Technical know-how for electrical steel manufacturing
- ✓ Short learning curve
- ✓ Application engineering
- ✓ New product development
- ✓ Benchmarking and personnel training

Other benefits:

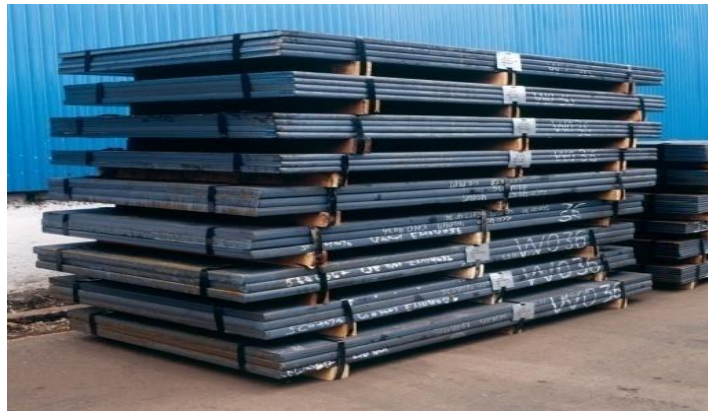
- ✓ Improvement in quality, productivity, yield, energy efficiency
- ✓ Sharing best maintenance, environment and safety practices
- ✓ Benchmarking, training and talent sharing
- ✓ Standardization of processes

Wide Range of Product Offering

Hot Rolled Coils



HR Plates / Sheets



Wire Rods



CRNO



CRCA



TMT Bars



Philanthropy at the Core of Shared Values

Vocational Training

- Training for Specially-abled children (112)
- Vocational training to students (3244)
- Sports training (1350)
- Life skills training (350)

Education

- Mid-day meals in schools (540 schools, 1.35 lakh children)
- Building schools (40 schools, 14000 children), helping with solar lamps, books, computers, teachers

Livestock & Agriculture

- Farmers under PPP model (1200) given seeds, fertilizers
- Planted 20 lakhs trees in 1334 acres

Women Empowerment

- Training of women for employment (1000) on rural BPO, 750 on textile & apparel, 1100 on entrepreneurship, 2000 on managerial skills, 1500 on self help groups

Art, Culture & Heritage

- Ancient temples restored and renovated also temples in villages
- Restored local arts and culture programs

Health

- Children immunization (600)
- Cataract surgeries (4000) Children Vision screening (5600)
- Antennal check-ups for women (2000), Institutional deliveries (700)

Sports

- Making School grounds (15)
- Providing sports equipment to schools
- Sponsoring to district level, state level (4) and national level (2) sports events

Infrastructure development

- >14 kms of Village roads constructed
- 6.5 kms of drainages constructed
- 2 new bus stands, 76 bus shelters, 4000 individual toilets,

Safety Culture at JSW Vijayanagar Works



Global recognition for quality & efficiency while nurturing nature and society

Health and Safety Policy

JSW Steel assigns highest priority and importance to safety and health of its employees, partners and communities around areas of its operation. We shall strive to become a role model in implementation of safe practices to ensure zero injury and attempt to go beyond statutory compliance by committing to :-

- Establishing systems and processes to create Safe Work environment
- Proactive approach in assessment & mitigation of risks related to Safety and Health of all stakeholders
- Prevention of injuries and occupational illness by implementing best practices and by creating awareness and providing training to the workforce including Associates, Contractors, Apprentices, Transport workers and Suppliers.
- Selection of Plant, Equipment, Machinery and Material considering their long term impact on health and safety of our stakeholders.

This policy and the level of implementation shall be periodically reviewed to ensure that it remains relevant and communicated to all concerned.

Rev No: 03
Date: 1st June 2017

Dr. Vineel Nowal
Deputy Managing Director

Steel Limited, Vijayanagar Works

JOURNEY TO SAFETY EXCELLENCE

In house safety practices

JSW's Initiative - DuPont Safety

Building Strong foundation, systems and skills

Supporting sustainable safety excellence



JSW Steel: Awards and Recognitions

